

1. Switch On

Turn on the device by pressing the Power button. The infrared image comes on, stays on, and the LED indicator is lighted on.

2. Switch Off

The camera will be switched off by long pressing the Power button and release the button when the count down timer change from 3 to 0.

3. Standby Mode

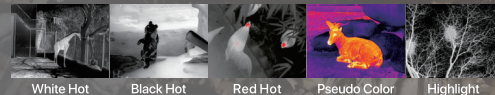
When the device is on, short press the Power button to enter the standby mode with indicator light flickering. Short press the Power button again to wake up the device from the standby mode to the normal mode.

4. Eyepiece Adjustment

The eyepiece adjustment can help user to get the clearest image for different eye conditions.

5. Switch the Image Mode

Short press the Image Mode button to switch the image mode from white hot, black hot, red hot, pseudo color, target highlight mode circularly.



6. Laser Indicator

Long press the Image Mode button to call out laser indicator, meanwhile the cursor shows on the display screen indicating the position of 50 meters away. Long press the button again to turn off the laser function, and the cursor is changed to the user cursor. The user can adjust the cursor position through the cursor calibration function in the menu. Long press again to close the user cursor.



7. E-Zoom

Short press the E-zoom button for image zooming from 1x-2x-4x circularly.

x2/x4

8. Storage

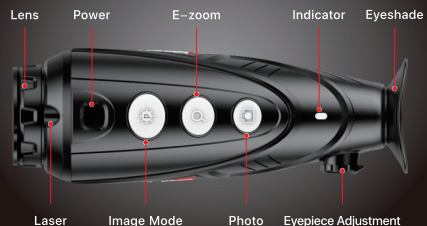
In the normal display mode, short press the Photo button to take photos and long-pressing for video recording. A video time prompt box appears in the upper-right corner. Long press again to quit and save the video.

9. Stadiametric Rangefinder

Long press the E-zoom and Image Mode button to turn the stadiametric rangefinder mode on/off. Then by short or long pressing the Image Mode button or the Photo button to adjust the selecting rang of the target. The distance of human (1.7m target), wild boar (0.9m target) and hare (0.2m target) can be measured and displayed behind the corresponding icon.



COMPONENTS & CONTROLS



10. Hot Spot Tracking

Long press the Image Mode button and Photo button simultaneously to start hot spot tracking function and the hottest objects on the screen can be tracked.



11. Setting Menu

Long press the E-zoom button to enter the main menu, then short press the Image mode button or the Photo button to toggle up and down. And short press the E-zoom button to perform following settings: WiFi / screen brightness / analog video / calibration mode / PIP / electronic compass / motion sensor and more. When done, long press the E-zoom button to exit the menu.



12. WiFi Function

Open the device's WiFi in the main menu, and connect the phone to the WiFi signal. The name of WiFi is Eye_XXXXXX, the password is 12345678. After the WiFi connection is successful, the APP installed on the phone can be used for real-time operations, such as taking photos and recording videos.

13. Video Out

Turn on the analog video in the main menu, and a video output icon will appear on the lower-right corner of the image. The analog video can be output to the monitor with the specific video transmission cable via the MCX interface.

14. Calibration Mode

Image degradation can be improved by manual correction. There are two mode available-B(background) and S(shutter), which can be switched through the main menu. Press and hold down the E-zoom and Photo button at the same time to achieve the manual correction. If the mode B is selected, the lens cover shall be closed during the correction.

15. Picture in Picture (PIP)

When the PIP function is turned on, a small window appears at the top center of the screen, showing a double zoom of the center area of the target image.

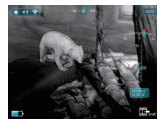


16. Digital Compass

Turn on the digital compass function in the main menu and it will be displayed in the middle top of the screen, indicating the current direction.

17. Motion Sensor

Turn on the motion sensor function in the main menu and it will be displayed on the right side of the screen, showing dip Angle and pitch Angle. Among them, the horizontal scaleplate represents the dip Angle, while the vertical scaleplate represents the pitch Angle.



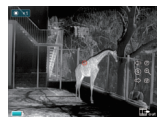
18. More

Under the option, short press the E-zoom button to enter the secondary menu, which contains the functions of cursor calibration, compass calibration, system information, factory resets, return to the main menu, etc.



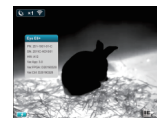
19. Cursor Calibration

When entering the reticle calibration interface, short press the E-zoom button to toggle from all directions. Short press the image mode button or Photo button to adjust the reticle position. When done, long press the E-zoom button to save and exit.



20. System Information

Short press the E-zoom button to enter the system information interface, under which user can check all version information and product code.



21. Factory Resets

Short press the E-zoom button for factory reset. Short press the Image Mode button or Photo button to make a yes or no choice. When done, short press the E-zoom button for a confirmation. After resuming factory settings, the image of the device will revert to white hot mode, brightness will be level 2, calibration mode will be S.



22. Charge

If the indicator is red, that means the battery is insufficient, please charge in time.





You can charge with the power adapter or any other power supply such as portable power.

The LED is orange when charging and turns green when fully charged.

23. Data Catching

After connecting the device with the computer via USB cable, the memory of the device (including photos and videos) can be read on the computer.

Eye II V2.0 Series

Model	 E3Plus V2.0	 E3Max V2.0	 E6+ V2.0	 E6Pro V2.0
Detector Resolution	384×288		640×480	
Pixel Size, um	12			
NETD, mk	≤50			
Frame Rate, Hz	50			
Objective Lens, mm	25	35	50	
Field of View, °	10.5×7.9	7.5×5.7	12.5×10.0	8.8×7.0
Display	1280×960 LCOS			
Laser*, nm	650			
Magnification, x	2.5~10	3.5~14.0	2.1~8.4	3.0~12.0
E-zoom, x	2/4			
Max. Battery Life*, h	≤7		≤6	
Weight, g	<450		<520	
Dimension, mm	181×65×64	186×65×64	188×65×64	202×65×64
Detection Range, m (Target:1.7m×0.5m, P(n)=99%)	1298	1818	2597	

- * The laser and cursor function may be disabled due to the legal restrictions in your countries and regions.
- * Actual operation time depends on the intensity of WiFi use and the built-in video recorder.
- * Technical parameters of the device may be improved without prior notice of the customer.

ATTENTION

1. The rated charging voltage of this product is 5V, please charge timely when power is low, so as to avoid the service life loss caused by battery over-discharge.
2. The thermal imager is not recommended to use in high-temperature environment for a long time, if the temperature is too high, the imager will enter the high-temperature protection state, and automatically shut down.
3. The use of temperature is recommended at -10°C to +50°C
4. Make sure that the USB/MCX port cover on the bottom of the thermal imager is tightly plugged firstly when using in water environment, such as rainy days.
5. Under any circumstances (whether on or off), do not expose the thermal imager directly into the high-intensity radiation sources (such as the sun, laser, etc.), to avoid irreversible damage to the device.
6. The B correction mode will reduce the frequency of automatic shutter correction after the condition of the device become stable. If the image gets worse, please cover the lens cover for manual background correction.
7. When the device is not used for a long time, it should be charged at least 2 months during storage and stored in a dry and ventilated environment.
8. Do not shine the laser pointer on human eyes.
9. The laser and cursor function depends on the legal restrictions of different countries and region.
10. Do not be charged in an environment above 40°C.



WeChat Official Account



Official Website

Eye II V2.0 Series

THERMAL MONOCULAR

QUICK START GUIDE

2020.06



IRay Technology Co., Ltd.

Add: 11th Guiyang Street, YEDA, Yantai 264006, P.R. China

Tel: 0086-400-998-3088

Web: www.xinfrared.com / www.infiray.com

Email: sales@iraytek.com